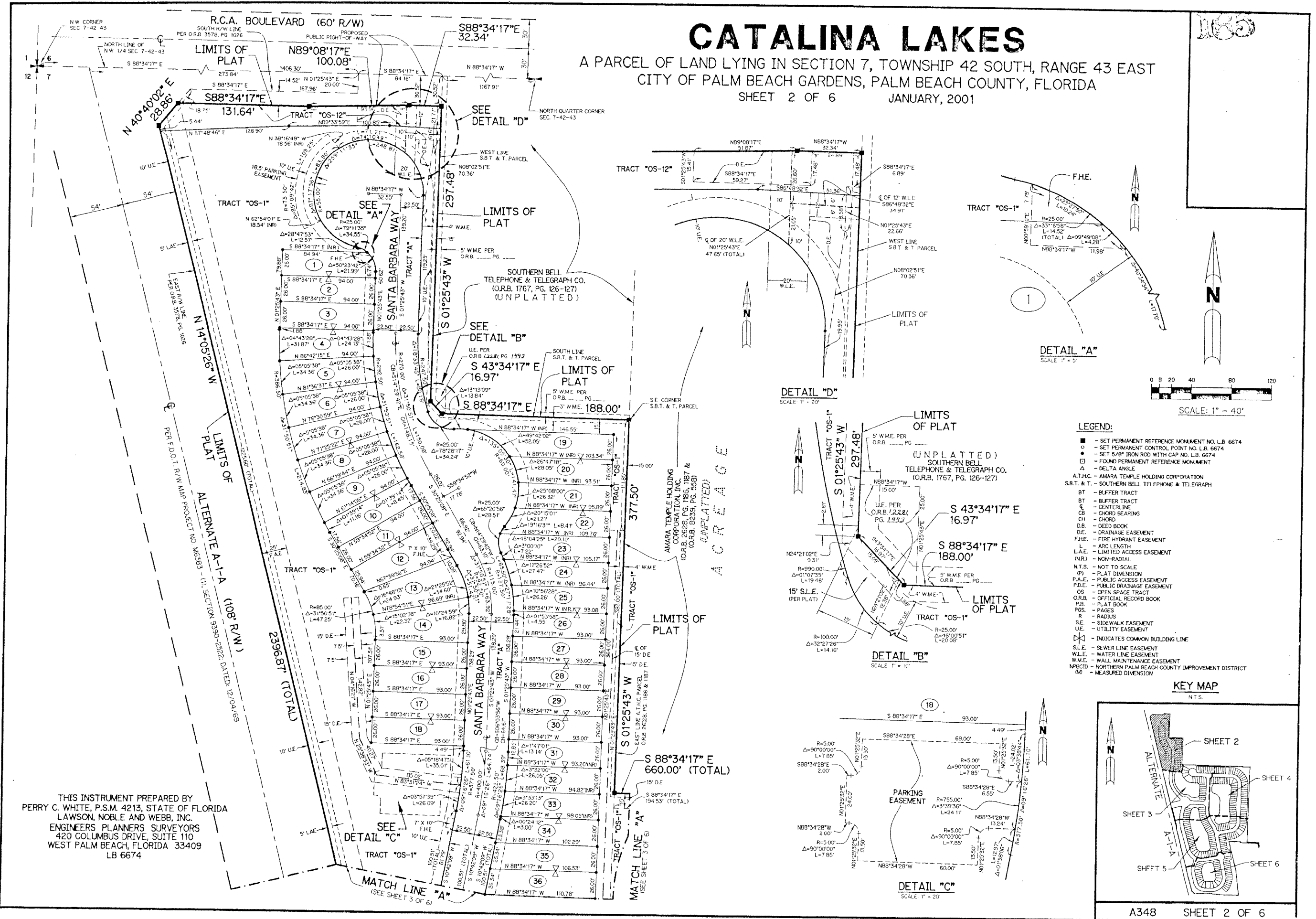


CATALINA LAKES

A PARCEL OF LAND LYING IN SECTION 7, TOWNSHIP 42 SOUTH, RANGE 43 EAST
CITY OF PALM BEACH GARDENS, PALM BEACH COUNTY, FLORIDA
SHEET 2 OF 6 JANUARY, 2001



THIS INSTRUMENT PREPARED BY
PERRY C. WHITE, P.S.M. 4213, STATE OF FLORIDA
LAWSON, NOBLE AND WEBB, INC.
ENGINEERS PLANNERS SURVEYORS
420 COLUMBUS DRIVE, SUITE 110
WEST PALM BEACH, FLORIDA 33409
LB 6674

- LEGEND:**
- - SET PERMANENT REFERENCE MONUMENT NO. LB 6674
 - - SET PERMANENT CONTROL POINT NO. LB 6674
 - - SET 5/8" IRON ROD WITH CAP NO. LB 6674
 - ED - FOUND PERMANENT REFERENCE MONUMENT
 - Δ - DELTA ANGLE
 - AT.H.C. - AMARA TEMPLE HOLDING CORPORATION
 - S.B.T. & T. - SOUTHERN BELL TELEPHONE & TELEGRAPH
 - BT - BUFFER TRACT
 - BT - BUFFER TRACT
 - CL - CENTERLINE
 - CB - CHORD BEARING
 - CH - CHORD
 - DB - DEED BOOK
 - DE - DRAINAGE EASEMENT
 - F.H.E. - FIRE HYDRANT EASEMENT
 - L - ARC LENGTH
 - L.A.E. - LIMITED ACCESS EASEMENT
 - NR - NON-RADIAL
 - N.T.S. - NOT TO SCALE
 - (P) - PLAT DIMENSION
 - P.A.E. - PUBLIC ACCESS EASEMENT
 - P.D.E. - PUBLIC DRAINAGE EASEMENT
 - OS - OPEN SPACE TRACT
 - O.R.B. - OFFICIAL RECORD BOOK
 - P.B. - PLAT BOOK
 - PGS. - PAGES
 - R - RADIUS
 - SE - SIDEWALK EASEMENT
 - UE - UTILITY EASEMENT
 - ⊗ - INDICATES COMMON BUILDING LINE
 - S.L.E. - SEWER LINE EASEMENT
 - W.L.E. - WATER LINE EASEMENT
 - W.M.E. - WALL MAINTENANCE EASEMENT
 - N.P.B.C.I.D. - NORTHERN PALM BEACH COUNTY IMPROVEMENT DISTRICT
 - MD - MEASURED DIMENSION

